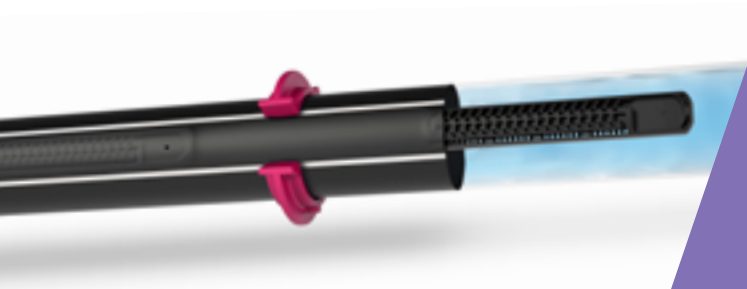


Leach Line™ A Ω

Heap leaching for copper, gold & silver mines.

→ 16009 - 16010 - 16012 - 20010 - 20012



Self Cleaning Mechanism



High Clogging Resistance



Anti-Migration Mechanism (optional)

Overview

Leach Line A™ is the industry leading non pressure compensated dripper, with a proven experience in mines leaching. The dripper is welded to the wall of the seamless pipe assuring strength and durability. Made from UV and acid resistant polyethylene tubing; the highest quality resins available

Available diameters: 16 and 20 OD (outside diameter).

Available flow rates: 1.0, 1½, 2.0, 3.0, 4.0 and 8.0 l/h.

Benefits & Features

- ✓ Superior TurbuNext™ flow labyrinth that ensures superior clogging resistance
- ✓ Wide and deep flow path cross-section that minimizes clogging and ensures exact flow rate in all working conditions
- ✓ Large filtration area for optimal performance
- ✓ Internal emitter protected against mechanical damage
- ✓ Injected molded drippers ensure high uniformity and very low CV, that assure uniform irrigation along all the leaching cycle

→ APPLICATIONS

- On-surface or subsurface applications of heap leaching on -surface or subsurface, on a flat terrain and slopes
- Pad slopes
- When high uniformity and longer runs are required

→ ANTI-MIGRATION DRIPPERLINE RING (OPTIONAL)

PRE-INSTALLED RING

- ✓ Prevents solution migration on uneven surfaces and slopes
- ✓ Available for 16 and 20 mm OD dripperlines

→ DRIPPERLINES TECHNICAL DATA

MODEL	INSIDE DIAMETER (MM)	WALL THICKNESS (MM)	OUTSIDE DIAMETER (MM)	MAX. WORKING PRESSURE (BAR)	FLUSHING PRESSURE (BAR)	KD
16009	14.2	0.9	16.0	3.0	3.9	0.40
16010		1.0	16.2	3.5	4.6	
16012		1.2	16.6	4.0	5.2	
20010	17.5	1.0	19.5	3.5	4.0	0.10
20012		1.2	19.9	4.0	5.2	

→ DRIPPERS TECHNICAL DATA

16009, 16010, 20010 - 0.9 AND 1.0 MM WALL THICKNESS DRIPPERLINES

FLOW RATE (L/H)*	OPERATING PRESSURE (BAR)**	WATER PASSAGES DIMENSIONS			FILTRATION AREA (MM ²)	CONSTANT K	EXPONENT X
		WIDTH (MM)	DEPTH (MM)	LENGTH (MM)			
1.00	3.0 / 3½	0.60	0.74	65	47	0.347	0.46
1.50		0.71	0.85		49	0.520	
2.00		0.76	1.03	65	51	0.693	
3.00		0.90	1.20			1.040	
4.00		0.94	1.28	33	1.387		
8.00		1.52		28	50	2.773	

* Flow rate at 1.0 bar pressure ** According to drippeline wall thickness

→ FLOW RATE (L/H) VS. PRESSURE (BAR)

FLOW RATE (L/H)	0.4	0.6	0.8	1.0	1½	2.0	2½
1.00	0.66	0.79	0.90	1.00	1.21	1.38	1.53
1.50	0.98	1.19	1.35	1.50	1.81	2.06	2.29
2.00	1.31	1.58	1.80	2.00	2.41	2.75	3.05
3.00	1.97	2.37	2.71	3.00	3.61	4.13	4.57
4.00	2.62	3.16	3.61	4.00	4.82	5.50	6.10
8.00	5.25	6.32	7.22	8.00	13.26	12.19	11.00

* Nominal flow rate at 1.0 bar pressure ** 1.0 bar = 14.5 psi *** Q (flow rate) = K*P^X

→ 16012, 20012 - 1.2 MM WALL THICKNESS DRIPPERLINES

FLOW RATE (L/H)	OPERATING PRESSURE (BAR)**	WATER PASSAGES DIMENSIONS			FILTRATION AREA (MM ²)	CONSTANT K	EXPONENT X
		WIDTH (MM)	DEPTH (MM)	LENGTH (MM)			
1.05	4.0	0.60	0.74	65	47	0.364	0.46
1.60		0.71	0.85		49	0.554	
2.10		0.76	1.03	65	51	0.728	
3.15		0.90	1.20			1.092	
4.20		0.94	1.28	33	1.455		
8.40		1.52		28	50	2.912	

* Flow rate at 1.0 bar pressure ** According to drippeline wall thickness

→ FLOW RATE (L/H) VS. PRESSURE (BAR)

FLOW RATE (L/H)	0.4	0.6	0.8	1.0	1½	2.0	2½	3.0
1.05	0.69	0.83	0.95	1.05	1.27	1.44	1.60	1.74
1.60	1.05	1.26	1.44	1.60	1.93	2.20	2.44	2.65
2.10	1.38	1.66	1.89	2.10	2.53	2.89	3.20	3.48
3.15	2.07	2.49	2.84	3.15	3.80	4.33	4.80	5.22
4.20	2.75	3.32	3.79	4.20	5.06	5.77	6.40	6.96
8.40	5.51	6.64	7.58	8.40	10.12	11.55	12.80	13.92

* Nominal flow rate at 1.0 bar pressure ** 1.0 bar = 14.5 psi *** Q (flow rate) = K*P^X

→ DRIPPERLINES PACKAGING DATA (ON BUNDLES COILS)

MODEL	WALL THICKNESS (MM)	DISTANCE BETWEEN DRIPPERS (M)	COIL LENGTH (M)	AVERAGE** COIL WEIGHT (KG)	COILS IN A 40 FT. CONTAINER (UNITS)	TOTAL IN A 40 FT. CONTAINER (METERS)
16009	0.90	0.2 TO 1.00	500	20.7	330	165,000
16010	1.00	0.2 TO 1.00	500	23	330	165,000
16012	1.20	0.2 TO 1.00	400	22.3	352	140,800
20012	1.20	0.15 TO 1.00	300	20.2	330	99,000

* Calculated weight average. For further details see "Average Coil Weight Disclaimer".

→ CATLAOG NUMBERS

LEACH LINE™ A 16009 (COIL LENGTH 500 METERS) CATALOG NUMBER STARTING WITH 12315 + (ANY OF BELLOW 6 DIGITS)

FLOW RATE (L/H)	DISTANCE BETWEEN DRIPPERS (M)															
	0.2	0.25	0.3	0.33	0.35	0.4	0.45	0.5	0.55	0.6	0.65	0.7	0.75	0.8	0.9	1
1				000200												
1.5					000510											
2						002960		003000		000002						
3																
4										005000			000003			
8																

LEACH LINE™ A 16010 (COIL LENGTH 500 METERS) CATALOG NUMBER STARTING WITH 12308 + (ANY OF BELLOW 6 DIGITS)

FLOW RATE (L/H)	DISTANCE BETWEEN DRIPPERS (M)															
	0.2	0.25	0.3	0.33	0.35	0.4	0.45	0.5	0.55	0.6	0.65	0.7	0.75	0.8	0.9	1
1		000002				000012										
1.5						000016		001846			001856					
2			001990			002010	000018	002050	000024							
3																
4										005310	005320					
8																

LEACH LINE™ A 16012 (COIL LENGTH 100-504 METERS) CATALOG NUMBER STARTING WITH 12290 + (ANY OF BELLOW 6 DIGITS)

FLOW RATE (L/H)	DISTANCE BETWEEN DRIPPERS (M)														
	0.2	0.25	0.3	0.32	0.33	0.35	0.4	0.45	0.5	0.55	0.6	0.65	0.7	0.75	
1.05															
1.6							001890 (300)								
2.1															
3.15												000001 (504)			
4.2															
8.4														000002 (400)	

LEACH LINE™ A 20012 (COIL LENGTH VARIES) CATALOG NUMBER STARTING WITH 12380 + (ANY OF BELLOW 6 DIGITS)

FLOW RATE (L/H)	DISTANCE BETWEEN DRIPPERS (M)													
	0.2	0.25	0.3	0.33	0.35	0.4	0.45	0.5	0.55	0.6	0.65	0.7	0.75	
1.05														
1.6														
2.1														
3.15											004000 (360) Ω			
4.2														
8.4														

* Missing catalog numbers available upon request.

LEACH LINE™ A Ω 16009 (COIL LENGTH 500 METERS) CATALOG NUMBER STARTING WITH 12315 + (ANY OF BELLOW 6 DIGITS)

FLOW RATE (L/H)	DISTANCE BETWEEN DRIPPERS (M)															
	0.2	0.25	0.3	0.33	0.35	0.4	0.45	0.5	0.55	0.6	0.65	0.7	0.75	0.8	0.9	1
1																
1.5								000001								
2																
3																
4																
8																

LEACH LINE™ A Ω 16010 (COIL LENGTH 500 METERS) CATALOG NUMBER STARTING WITH 12308 + (ANY OF BELLOW 6 DIGITS)

FLOW RATE (L/H)	DISTANCE BETWEEN DRIPPERS (M)															
	0.2	0.25	0.3	0.33	0.35	0.4	0.45	0.5	0.55	0.6	0.65	0.7	0.75	0.8	0.9	1
1																
1.5																
2						000003										
3																
4																
8																

LEACH LINE™ A Ω 16012 (COIL LENGTH 100-504 METERS) CATALOG NUMBER STARTING WITH 12290 + (ANY OF BELLOW 6 DIGITS)

FLOW RATE (L/H)	DISTANCE BETWEEN DRIPPERS (M)														
	0.2	0.25	0.3	0.32	0.33	0.35	0.4	0.45	0.5	0.55	0.6	0.65	0.7	0.75	
1.05				001001 (300)											
1.6							001900 (300)		000003 (400)						
2.1							002900 (100)				003200 (504)				
3.15													006000 (400)		
4.2															
8.4															