

ARAD™ WSThp Woltman Type

Mechanical register

Combines advanced hydraulic performance with ARAD proven register technology for reliable, high-accuracy water measurement.



Water Supply Networks



Agricultural Applications



Greenhouses

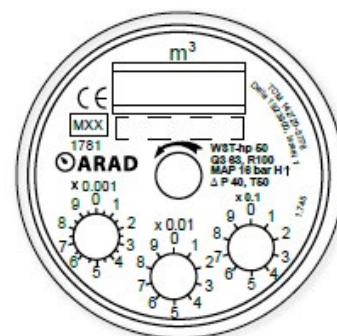
/ Benefits & Features

The WSThp features an **extended measuring range**, enabling **versatile performance** across a **wide variety of applications**, including **extreme conditions** such as very low and very high flow rates.

- Robust performance - Unaffected by external working conditions such as **mechanical vibrations**.
- Reliable operation - Unaffected by humidity, even when the dry chamber is fully flooded.
- High compatibility - Compatible with IP68 registers and EV/EF pulse output options.

/ Specifications & Recommendations

- Maximum Working Pressure- 16 bar
- Maximum Liquid Temperature- 50°C
- Body - Ductile cast iron, polyester coated
- Connection Flanges according to ISO16, BSTD, ANSI 150
- Register options: EV, EF



WSThp Register

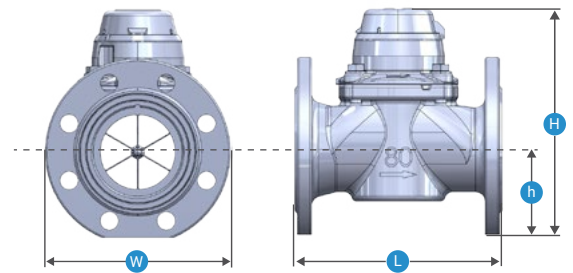
/ Installation Requirements

It is recommended to install Woltman meters with a non-return valve downstream. No straight pipe lengths are required before or after the meter (D0/U0).

- The meter must always be installed in a full-pipe section.
 - Flush the pipeline before installation.
 - Ensure a suitable air release valve is installed.
 - Install the meter horizontally, with the register facing upward.
 - Install the meter according to the flow direction indicated by the arrow on the body.

→ Technical Dimensions

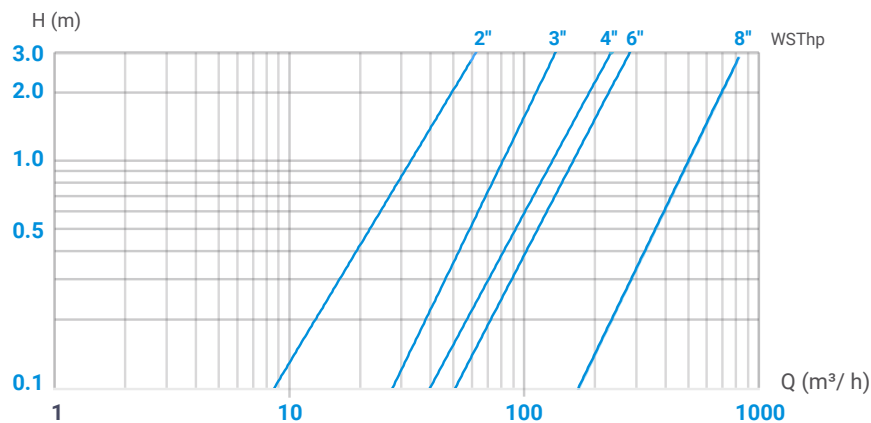
Nominal size	mm	50	65	80	100	150	200
	inch	2	2.5	3	4	6	8
L - Length (mm)		200	200	225	250	300	350
W - Width (mm)		165	180	200	220	285	340
H - Height (mm)		223	238	245	263	323	377
Weight (kg)		12.5	13.5	15.5	19	35.5	41



→ Performance Data

Diameter		Q1 Minimum Flow Rate (m³/h)	Q2 Transitional Flow Rate (m³/h)	Q3 Nominal Flow Rate (m³/h)	Q4 Maximum Flow Rate (m³/h)	Starting Flow (m³/h)	Maximum Register Capacity (m³/h)	R Q3/ Q1	Accuracy Between Q4 & Q2	Accuracy Between Q2 & Q1
mm	inch									
50	2	0.63	1.01	63	78.75	0.15	10 ⁶	100	±2%	±5%
65	2.5	0.63	1.01	63	78.75	0.15				
80	3	1	1.6	100	125	0.25				
100	4	1.6	2.56	160	200	0.3	10 ⁷	100	±2%	±5%
150	6	2.5	4	250	312.5	0.8				
200	8	4	6.4	400	500	2				

→ Head Loss



→ Catalog Numbers

For Woltman WSThp Type Water Meter with EV Mechanical Register

Material	Diameter	Connection Type	Pulse Resolution	Catalog Number	
Cast Iron	2"	ISO	None	70240-021600	
			10L	70240-021601	
			100L	70240-021602	
		BSTD	None	70240-021603	
			10L	70240-021604	
			100L	70240-021605	
			ANSI	None	70240-021700
				10L	70240-021701
				100L	70240-021702
	3"	ISO	None	70240-021610	
			10L	70240-021611	
			100L	70240-021612	
		BSTD	None	70240-021613	
			10L	70240-021614	
			100L	70240-021615	
			ANSI	None	70240-021710
				10L	70240-021711
				100L	70240-021712
	4"	ISO	None	70240-021620	
			10L	70240-021621	
			100L	70240-021622	
		BSTD	None	70240-021623	
			10L	70240-021624	
			100L	70240-021625	
ANSI			None	70240-021720	
			10L	70240-021721	
			100L	70240-021722	

Material	Diameter	Connection Type	Pulse Resolution	Catalog Number	
Cast Iron	6"	ISO	None	70240-021630	
			100L	70240-021631	
			1m3	70240-021632	
		BSTD	None	70240-021633	
			100L	70240-021634	
			1m3	70240-021635	
			ANSI	None	70240-021730
				100L	70240-021731
				1m3	70240-021732
	8"	ISO	None	70240-021640	
			100L	70240-021641	
			1m3	70240-021642	
		BSTD	None	70240-021643	
			100L	70240-021644	
			1m3	70240-021645	
			ANSI	None	70240-021740
				100L	70240-021741
				1m3	70240-021742



Additional diameters, flange types, and pulse resolutions available upon request
All SKU's include reed switch cable

→ Catalog Numbers

For Woltman WSThp type water meter with Photo Diode register

Material	Diameter	Connection Type	Pulse Resolution	Catalog Number
Cast Iron	2"	ISO	1L	70240-000082
	3"		1L	70240-000083
	4"		1L	70240-000084
	6"		10L	70240-000085
	8"		100L	70240-000086



Additional diameters, flange types, and pulse resolutions available upon request
All SKU's include reed switch cable