

Complementary Accessories

→ FITTINGS

ILLUSTRATION	DESCRIPTION	CATALOG NUMBERS
	ELBOW CONNECTOR 1/8"-8MM	76400-003400
	ELBOW CONNECTOR 1/4"-8MM	76400-003500
	STRAIGHT CONNECTOR 1/8"-8MM	76400-002100
	STRAIGHT CONNECTOR 1/4"-8MM	76400-002300
	T-CONNECTOR FOR TUBE 8MM- 1/8"-8MM	76400-004450
	T-CONNECTOR FOR TUBE 8MM-1/4"-8MM	71680-018575
	MALE PLUG 1/4" NPT	71610-000800
	MALE PLUG 3/8" NPT	71610-000810
	1/4" SELF-FLUSHING, INLINE CONTROL-FILTER	76400-013755
	TEFEN UNION CONNECTOR 8 MM	76400-001300
	TEFEN UNION TEE 8 MM	76400-004000
	TEFEN MALE RUN TEE 8 X 8 X 1/8"	76400-004550
	TEFEN PIPE REDUCING NIPPLE 1/4"-1/8"	76400-006600
	TEFEN PIPE REDUCING NIPPLE 1/2"- 1/4"	76400-006900
	KIT CHECK POINT TEE 8*1/8"*1/4" (CP)	76400-015901
	KIT CHECK POINT TEE 1/8"*8*1/4" (CP)	76400-015902
	SELF-FLUSHING, INLINE CONTROL FILTER 1/2"	71680-014100
	BUSHING MALE-FEMALE 1/2" - 1/4"	78301-003170

→ PRESSURE GAUGES

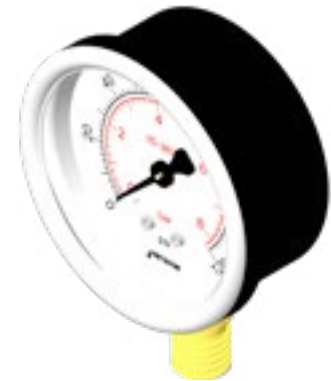
DESCRIPTION	CATALOG NUMBER
BOTTOM INLET GLYCERIN GAUGE	
NPG 2½" GLC 0-4 BAR ¼" BSP	77456-000222
NPG 2½" GLC 0-6 BAR ¼" BSP	77456-000223
NPG 2½" GLC 0-8 BAR ¼" BSP	77456-000224
NPG 2½" GLC 0-10 BAR ¼" BSP	77456-000225
NPG 2½" GLC 0-16 BAR ¼" BSP	77456-000226
NPG 2½" GLC 0-4 BAR ¼" NPT	77456-000227
NPG 2½" GLC 0-6 BAR ¼" NPT	77456-000228
NPG 2½" GLC 0-8 BAR ¼" NPT	77456-000229
NPG 2½" GLC 0-10 BAR ¼" NPT	77456-000230
NPG 2½" GLC 0-16 BAR ¼" NPT	77456-000231



REAR INLET GLYCERIN GAUGE	
NPG AX 2½" GLC 0-4 BAR ¼" BSP	77456-000232
NPG AX 2½" GLC 0-6 BAR ¼" BSP	77456-000233
NPG AX 2½" GLC 0-8 BAR ¼" BSP	77456-000234
NPG AX 2½" GLC 0-10 BAR ¼" BSP	77456-000235
NPG AX 2½" GLC 0-16 BAR ¼" BSP	77456-000236
NPG AX 2½" GLC 0-4 BAR ¼" NPT	77456-000237
NPG AX 2½" GLC 0-6 BAR ¼" NPT	77456-000238
NPG AX 2½" GLC 0-8 BAR ¼" NPT	77456-000239
NPG AX 2½" GLC 0-10 BAR ¼" NPT	77456-000240
NPG AX 2½" GLC 0-16 BAR ¼" NPT	77456-000241



BOTTOM INLET DRY GAUGE	
NPG 2½" DRY 0-4 BAR ¼" BSP	77456-000100
NPG 2½" DRY 0-6 BAR ¼" BSP	77456-000101
NPG 2½" DRY 0-8 BAR ¼" BSP	77456-000210
NPG 2½" DRY 0-10 BAR ¼" BSP	77456-000103
NPG 2½" DRY 0-16 BAR ¼" BSP	77456-000104
NPG 2½" DRY 0-4 BAR ¼" NPT	77456-000120
NPG 2½" DRY 0-6 BAR ¼" NPT	77456-000121
NPG 2½" DRY 0-8 BAR ¼" NPT	77456-000211
NPG 2½" DRY 0-10 BAR ¼" NPT	77456-000123
NPG 2½" DRY 0-16 BAR ¼" NPT	77456-000124



REAR INLET DRY GAUGE	
NPG AX 2½" DRY 0-4 BAR ¼" BSP	77456-000212
NPG AX 2½" DRY 0-6 BAR ¼" BSP	77456-000213
NPG AX 2½" DRY 0-8 BAR ¼" BSP	77456-000214
NPG AX 2½" DRY 0-10 BAR ¼" BSP	77456-000215
NPG AX 2½" DRY 0-16 BAR ¼" BSP	77456-000216
NPG AX 2½" DRY 0-4 BAR ¼" NPT	77456-000217
NPG AX 2½" DRY 0-6 BAR ¼" NPT	77456-000218
NPG AX 2½" DRY 0-8 BAR ¼" NPT	77456-000219
NPG AX 2½" DRY 0-10 BAR ¼" NPT	77456-000220
NPG AX 2½" DRY 0-16 BAR ¼" NPT	77456-000221



3-Way Selectors

3-way brass ball valve for hydraulic flow control. Automatic and computerized irrigation systems for agriculture and landscape gardening. Filtering, industrial, domestic water supply systems.



Reliable



Resistant



Ultimate
Durability

Benefits & Features

- ✓ The valves have a common port at the base of the valve body. Any of the three peripheral ports can be connected to the common port – the other ports are totally sealed
- ✓ Designed for three hydraulic control positions: Open, Closed, and Automatic
- ✓ Valves are sealed when handle position in between port position
- ✓ User friendly design allows smooth operation of handle with position indicator
- ✓ Easy viewing of the operating position

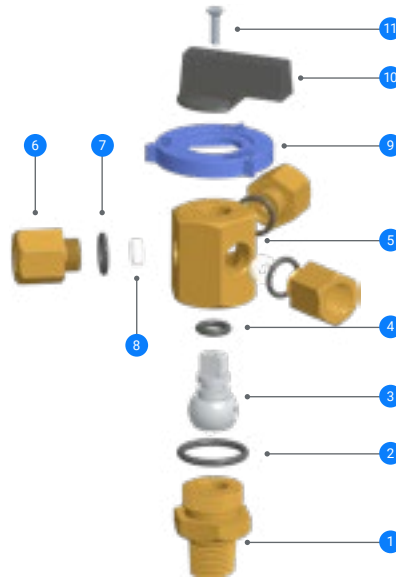
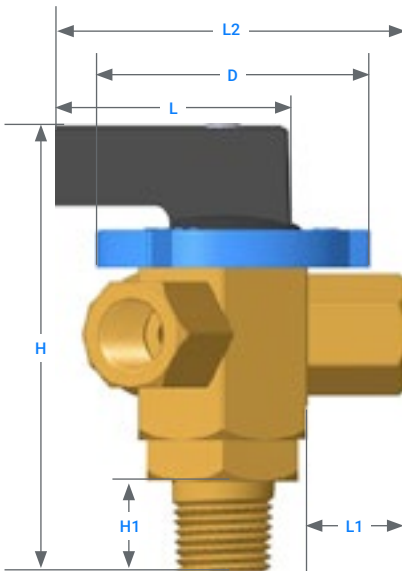
Specifications & Recommendations

- Common port at base of the valve body
- Base port thread: Male threaded 1/4" BSP or NPT
- Three threaded ports: Female threaded 1/8" BSP or NPT or 1/4" BSP or NPT
- Passage size: 3.5 mm
- Maximum working pressure: 10 Bar
- One moving part only

→ PACKAGING DATA

MODEL	QTY. P/BOX UNIT	BOX SIZES (CM X CM X CM)	BOX WEIGHT (KG)	BOXES P/PALLET
¼" MTH - 3 X ⅜" FTH	100	41.0 X 26.5 X 12.0	14.4	64
¼" MTH - 3 X ¼" FTH	40	26.7 X 19.5 X 13.5	9.7	120

→ TECHNICAL DIMENSIONS



→ MATERIAL SPECIFICATION


#	PART NAME	MATERIAL	QTY.
1	BASE	BRASS	1
2	BASE O-RING	EPDM	1
3	BALL	NICKEL PLATED BRASS	1
4	BALL O-RING	EPDM	1
5	BODY	BRASS	1
6	NOZZLE	BRASS	3
7	NOZZLE O RING	EPDM	3
8	SEAL	TEFLON (PTFE)	3
9	BODY COVER	ABS	1
10	HANDLE	ABS	1
11	SCREW	STAINLESS STEEL	1

SIZE	NOM	D (MM)	L (MM)	L1 (MM)	L2 (MM)	H (MM)	H1 (MM)
¼" MTH - 3 X ⅜" FTH		33.0	43.5	13.0	58.0	53.2	12.0
¼" MTH - 3 X ¼" FTH		42.3	49.0	13.6	67.6	73.2	12.0


→ CATALOG NUMBERS

PRODUCT ILLUSTRATION	PRODUCT DESCRIPTION	CATALOG NUMBER
	NMV BR BALL VLV 3W ¼" MTH ⅜" FTH BSP	77455-000200
	NMV BR BALL VLV 3W ¼" MTH ⅜" FTH NPT	77455 000201
	NMV BR BALL VLV 3W ¼" MTH ¼" FTH BSP	77455 000202
	NMV BR BALL VLV 3W ¼" MTH ¼" FTH NPT	77455 000203

→ **ADDITIONAL COMPONENTS**

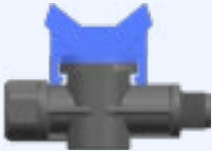
PRODUCT ILLUSTRATION	PRODUCT DESCRIPTION	CATALOG NUMBER
3-WAY BRASS VALVES		
	NMV BR BALL VLV 3W ¼" MTH ⅛" FTH BSP	77455-000200
	NMV BR BALL VLV 3W ¼" MTH ⅛" FTH NPT	77455-000201
	NMV BR BALL VLV 3W ¼" MTH ¼" FTH BSP	77455-000202
	NMV BR BALL VLV 3W ¼" MTH ¼" FTH NPT	77455-000203

BRASS MODEL

	PRESSURE GAUGE VALVE ¼ SM	76040-001100
---	---------------------------	--------------


* ¼" NPT male x female threaded connection
 * Max. Working Pressure: 25 Bar

PLASTIC MODEL

	NPG ¼" MTH-FTH BSP VALVE	77456-000180
--	--------------------------	--------------



* System vibration not affect the pressure gauge.
 * ¼" BSP or NPT male x female threaded connection
 * Max. Working Pressure: 6 Bar
 * All parts are chemical/corrosion resistant, color UV stabilized.

PRESSURE GAUGE PITOT NEEDLE

	NPG PITOT NEEDLE ¼" BSP	77456-000200
	NPG PITOT NEEDLE ¼" NPT	77456-000201

* ¼" thread for direct connection to the pressure gauge
 * Fits into dedicated measuring points (see below), allowing measuring pressure at any given point along the system.

PRESSURE MEASURING POINT

	PRESSURE MEASURING POINT - BARB	63000-002800
	PRESSURE MEASURING POINT - ⅛" BSP	63000-002750