

AlphaDisc™ BLE: Smartphone Operated Controller for Filtration Systems

INTRODUCTION

Thank you for purchasing the AlphaDisc™ BLE Controller - a smartphone operated controller for filtration systems. The system consists of two major components, the AlphaDisc™ BLE Controller and the AlphaDisc™ Mobile Application.

For additional information about the AlphaDisc™ filter, as well as a complete user guide for your AlphaDisc™ BLE controller, please scan the QR code or visit our [website](#).

This Quick Guide provides the “getting started” instructions for a new filtration system which is equipped with the integral AlphaDisc™ BLE controller.



IMPORTANT: If your AlphaDisc™ BLE controller was supplied as a **standalone device** for controlling existing filtration systems, please first refer to the **Installing the AlphaDisc™ BLE Controller on an Existing Filter** chapter in the **AlphaDisc™ BLE IOM** and make sure to install the controller properly before attempting to operate the system.

SAFETY FIRST: Before starting, read the **Safety Instructions** chapter in the **AlphaDisc™ BLE IOM**. Make sure that you understand and comply with all the relevant safety instructions.

GETTING TO KNOW THE ALPHADISC™ BLE CONTROLLER:



Single solenoid controller



Dual solenoid controller

1. AlphaDisc™ BLE panel for manual flushing button and indication LEDs
2. 3-Way 12VDC solenoid #1 – latch


3. 3-Way 12VDC solenoid #2 – latch
4. Solenoids› manual operation handles
5. AlphaDisc™ BLE cover

INITIAL OPERATION OF THE ALPHADISC™ BLE CONTROLLER:

Open the cover of the AlphaDisc™ BLE Controller by turning it counterclockwise [1] and insert four alkaline 1.5V AA batteries [2]. The Power LED turns on and the AlphaDisc™ BLE Controller starts operating according to its pre-defined

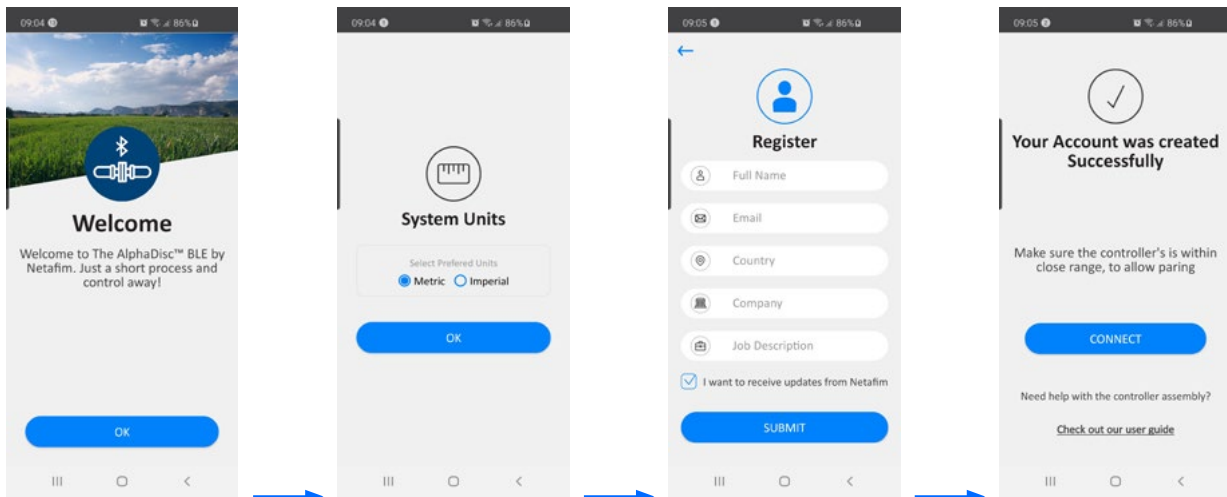


DOWNLOADING THE MOBILE APPLICATION:

 The free AlphaDisc™ BLE application by Netafim is available for download on Google Play (Android version 5 and up) or the App Store (iOS version 9 and up).

PAIRING THE CONTROLLER WITH YOUR MOBILE PHONE:

1. Activate your phone's Bluetooth® discovery mode and start the AlphaDisc™ BLE application.
2. Select the applicable SYSTEM UNITS.
3. REGISTER your filter to create an account.




Click CONNECT. The application scans for controllers within Bluetooth® range.

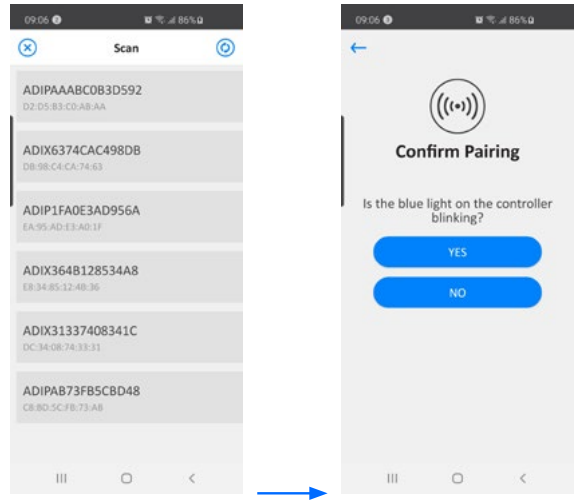
5. Select your controller from the list of controllers in range. Verify that the blue/green LED on your controller is blinking before clicking YES to initiate the pairing process.
6. Confirm the pairing process.

Complete the SITE ID form.

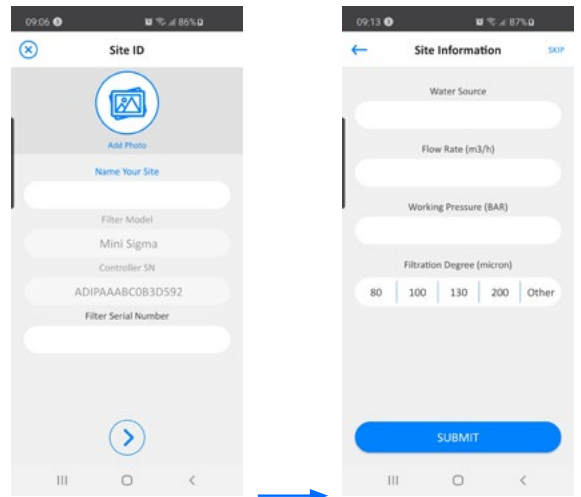
- a. **Controller supplied with filter:** Name your site and then select "Predefined". The application reads the filter model and controller's serial number automatically.
- b. **Controller purchased separately:** Name your site, select the filter model and enter your controller's serial number.

You may add a site photo by clicking on 

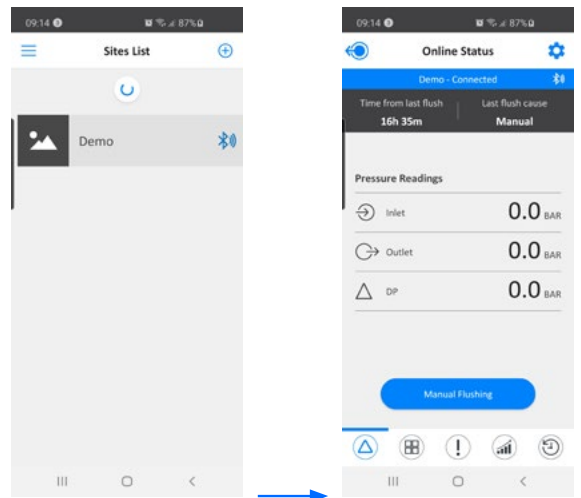
- 8. Enter the SITE INFO details (optional).
- 9. Once done, click SUBMIT to add your new filter to the SITE LIST.



- 10. In order to view data from your controller, select the active controller from the SITE LIST, marked by the active Bluetooth® icon.

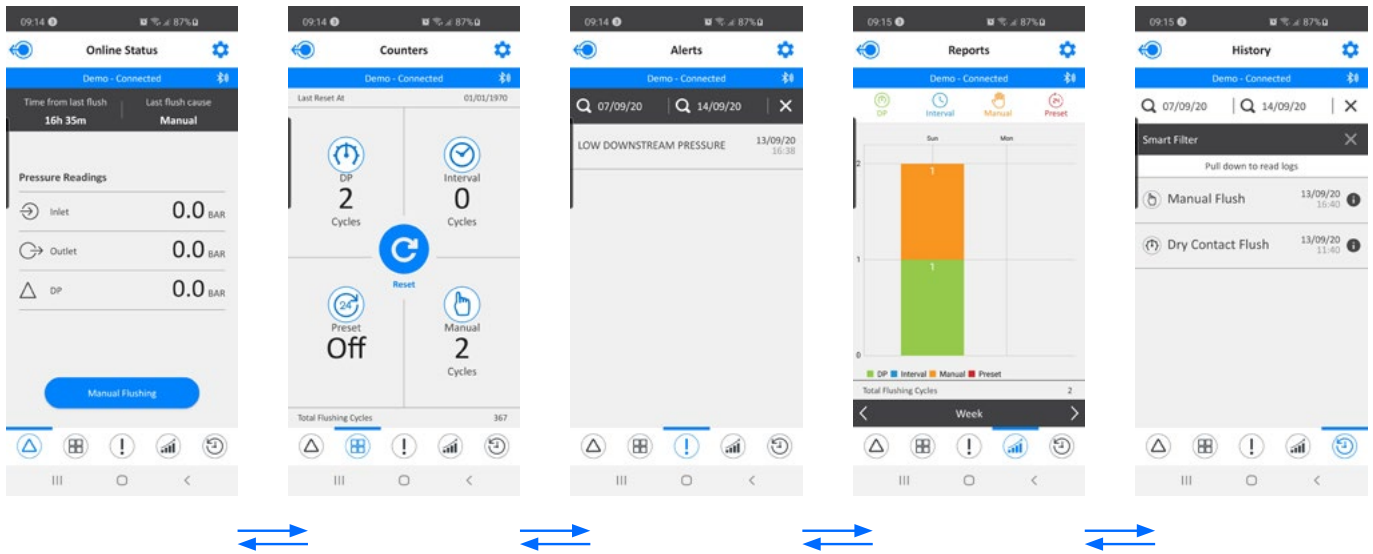


- 11. The ONLINE STATUS screen appears and relevant data regarding your filter's performance can be viewed.

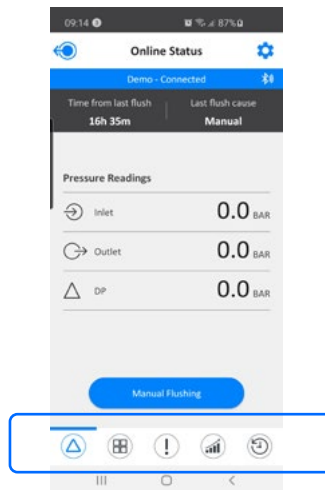


GETTING TO KNOW THE ALPHADISC™ BLE APPLICATION:

Take a few moments to familiarize yourself with the AlphaDisc™ BLE mobile application interface: Once running and controlling the filter, the application has 5 main screens. Scroll through these screens by sliding to the right or to the left.



You may also reach the desired screen by clicking on the designated icons that appear at the bottom of the screen.



Manufacturer
Amiad Water Systems Ltd.
D.N. Galil Elyon 1, 1233500, Israel.
Tel: +972 4690 9500 | Fax: +972 48141159 | Email: info@Netafim.com

EU Declaration <https://www.amiad.com/certificatesDownload.asp>