

SPARE PARTS BREAKDOWN:

Manifolds section & accessories

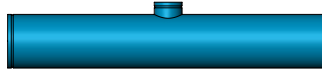
Manifold sections

Single-sided manifold sections

Tank diameter (in)	Type of manifold	Manifold diameter (in)	Number of outlets	Outlet diameter (in)	Cat. No.
20	Inlet/outlet	4	2	2	71910-001706
			3	2	71910-001715
	Backflush	3	2	2	71910-001705
			3	2	71910-001714
24	Inlet/outlet	4	2	2	71910-001708
			3	2	71910-001717
	Backflush	3	2	2	71910-001707
			3	2	71910-001716
30-36	Inlet/outlet	6	1	3	71910-001701
			2	3	71910-001710
	Backflush	3	1	2	71910-001700
			2	2	71910-001709
48	Inlet/outlet	8	1	4	71910-001704
			2	4	71910-001713
	Backflush	4	1	3	71910-001703
			2	3	71910-001712

Inlet/outlet manifold sections -

1 outlet

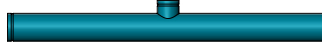


2 outlets



Backwash manifold sections -

1 outlet



2 outlets

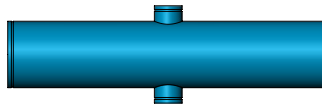


Double-sided manifold sections

Outlet manifold sections for parallel centered installations only

Tank diameter (in)	Type of manifold	Manifold's diameter (in)	Number of outlets	Outlet's diameter (in)	Cat. No.
30, 36	Inlet/outlet	8	2	3	71910-007000
			4	3	71910-000924
48	Inlet/outlet	10	2	4	71910-000050
			4	4	71910-000051

2 outlets



4 outlets



Manifolds of other diameters are available upon request.

Manifolds accessories

Inlet and outlet manifold end-caps

End-cap diameter (in)	Female threaded outlets	Cat. No.	
		BSP	NPT
4	3 x 1"	71910-001801	71910-001800
6	2 x 2" + 1 x 1"	71910-001803	71910-001802
8	2 x 2" + 1 x 1"	71910-001805	71910-001804
10	2 x 2" + 1 x 1"	71910-001820	71910-001821



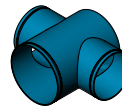
Backflush manifold end-caps

End-cap diameter (in)	Cat. No.
3	71910-001791
4	71910-001792



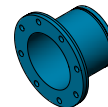
T-fittings (adaptors)

T-fitting diameter (in)	T-fitting outlets	Cat. No.
8	2 x 6"	71910-001801
10	2 x 6"	71910-001803
10	2 x 8"	71910-001805
14	2 x 10"	71910-001820



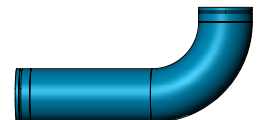
Flange-grooved coupling adaptors

Standard ›	ISO10	ISO16	ANSI	BSTD
Diameter (in)	Cat. No.			
3	71910-002005		71910-002003	71910-002004
4	71910-002008		71910-002006	71910-002007
6	71910-002011		71910-002009	71910-002010
8	71910-002014	71910-002040	71910-002012	71910-002013
10	71910-002017	71910-002018	71910-002015	71910-002016



Elbows

To order this spare part, call your local Netafim™ representative with the SKU (Stock Keeping Unit) number of your SandStorm™ filtration system at hand. **Only with this number can we supply the correct part for your specific system.** Find the SKU number on your system order form.



Grooved couplings

Diameter (in)	Cat. No.
2	71910-002500
3	71910-002501
4	71910-002502
6	71910-002503
8	71910-002504
10	71910-002505

