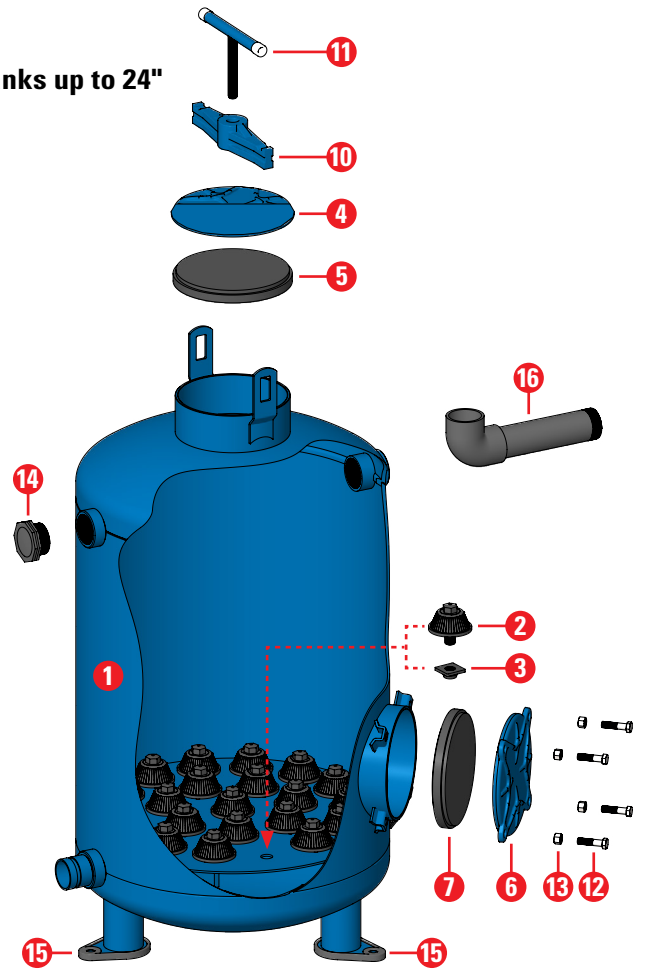


# SPARE PARTS BREAKDOWN:

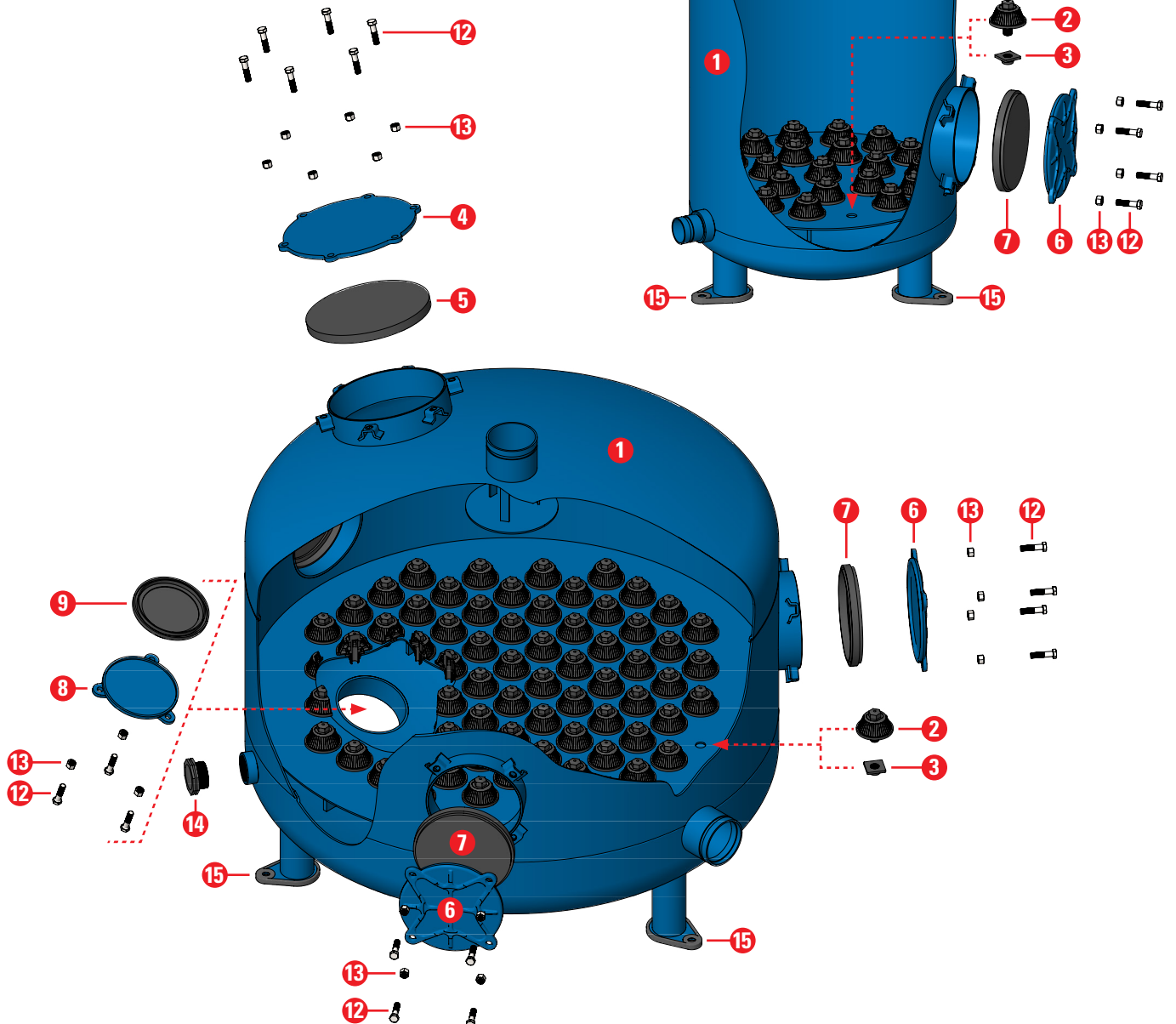
Metal double chamber V1 20" 24" 30" 36" 48"

## Tanks - double-chamber - Version 1

Tanks up to 24"



Tanks 30" and up



Part	Description	Tank diameter (in)	Cat. No.
1	Filter body	Not available as spare part	
2	Mushroom diffuser	All	71915-000102
3	Mushroom rubber gasket	All	71915-000103
4	Top service cover	6"	71915-000108
		8"	71915-000109
		10"	71915-000121
5	Top service cover gasket	6"	71915-000106
		8"	71915-000107
		10"	71915-000122
6	Side service cover	6"	71915-000112
		8"	71915-000113
7	Side service cover gasket	6"	71915-000110
		8"	71915-000107
8	Bottom service cover	6"	71915-000112
9	Bottom service cover gasket	6"	71915-000110
10	Tightening bridge	12, 16, 20, 24	71915-000104
11	Tightening handle	12, 16, 20, 24	71915-000105
12	Bolt M12X50	All	71915-000114
13	Nut M12	All	71915-000115
14	2" male plug (plastic)	All	75050-008800
15	Rubber leg cup	All	71915-000136
16	PVC nipple and elbow	12	71915-000116
		16	71915-000117
		20	71915-000118
		24	71915-000119

### Quantity of mushroom diffusers and rubber gaskets

Tank diameter (in)	Quantity
12	8
16	12
20	15
24	22
30	32
36	44
48	76