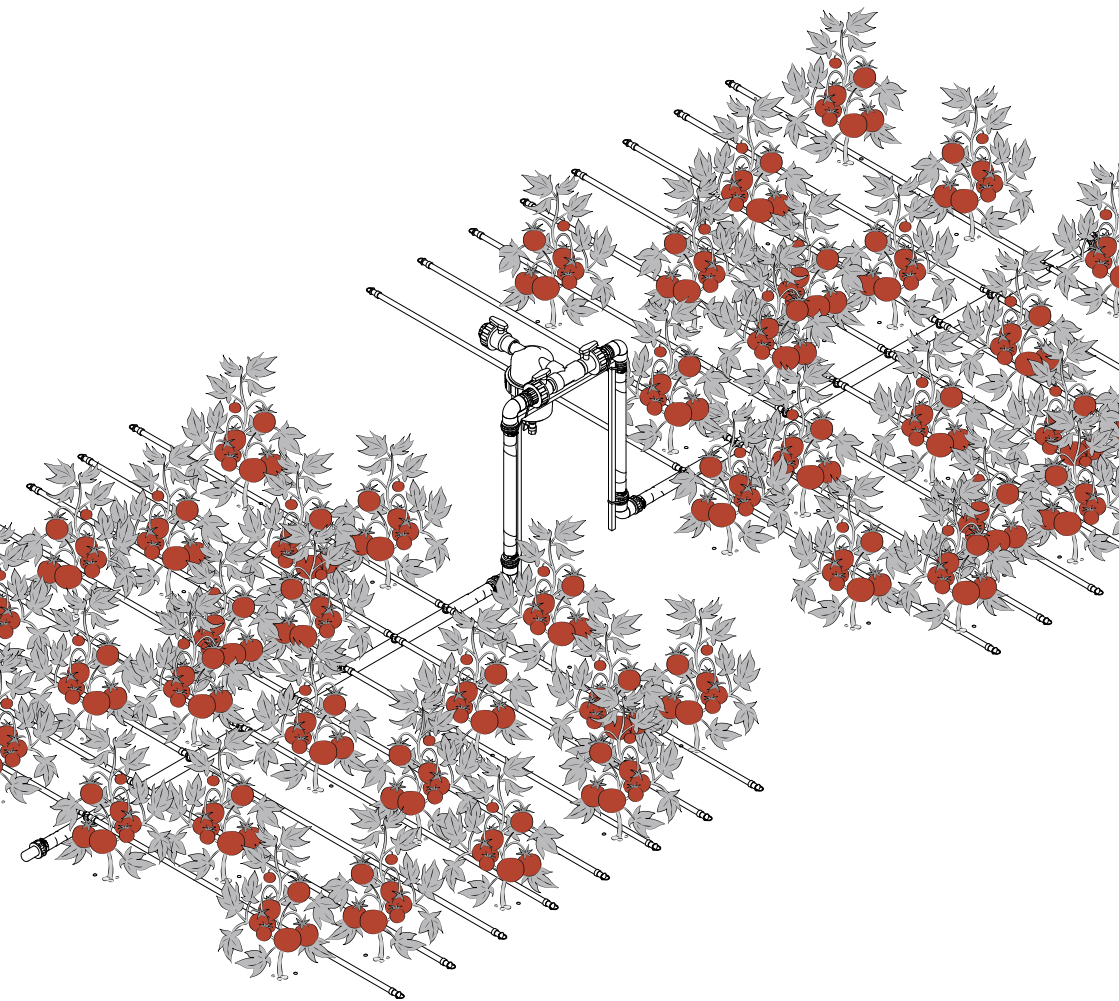


DripK S; DripK L

DRIP IRRIGATION SYSTEM

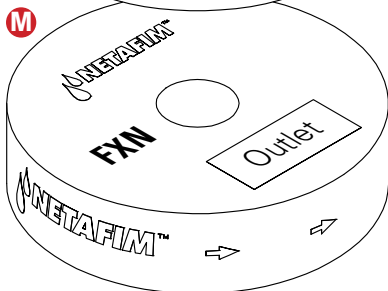
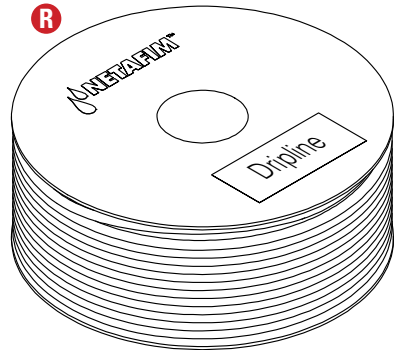
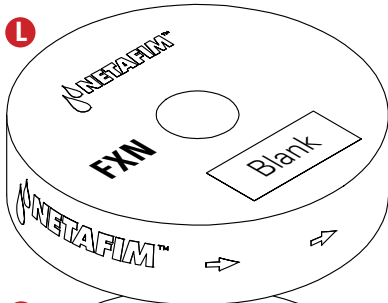
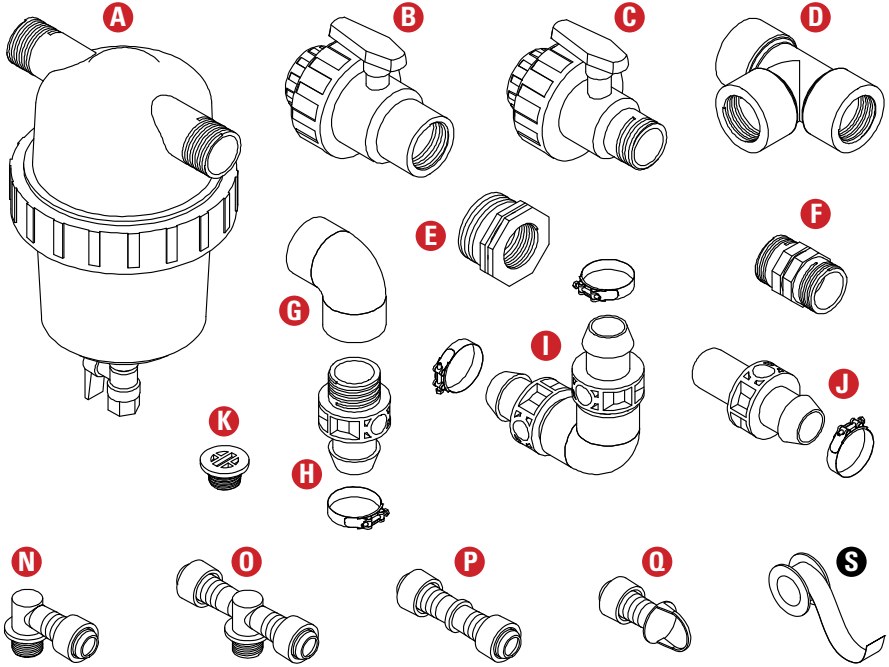
1600; 3200; 4000; 5000; 10000m²



EN

 **NETAFIM**TM
GROW MORE WITH LESS

Infield components



System Cat. No.		42000-015400		42000-015500		42000-015505		42000-015540		42000-015900		42000-015740		42000-015700		42000-015750	
DripK system name		1608	3216	4008	4016	5010	10FT	9610	9608	9616							
Area (m²)		1600	3200	4000	4000	5000	10000	10000	10000	10000							
Dripline spacing (m)		0.8	1.6	0.8	1.6	1.0	0.5	1.0	0.8	1.6							
A	Filter	1	1	1	1	1	1	1	1	1							
B	Ball valve M-M	1	1	1	1	1	1	1	1	1							
C	Ball valve M-F	2	2	2	2	2	2	2	2	2							
D	Tee PVC	1	1	1	1	1	1	1	1	1							
E	3" M→2" F PVC reducer	-	-	-	-	2	2	2	2	2							
F	Double nipple PVC	2	2	2	2	2	2	2	2	2							
G	Elbow 2"	2	2	2	2	2	2	2	2	2							
H	FXN barb connector	2	2	2	2	2	2	2	2	2							
I	Elbow 2" - FXN	2	2	2	2	2	2	2	2	2							
J	End cap 2" - FXN	2	2	2	2	2	2	2	2	2							
K	FXN plug	50	50	50	50	50	50	50	50	100							
L	FXN blank pipe, 50m	-	-	-	-	1	1	1	1	1							
M	FXN outlet pipe, 50m	1	1	1	1	2	2	2	2	2							
N	Elbow Ring	70	70	40	50	200	100	130	70	70							
O	Tee ring	70	70	40	50	200	50	130	70	70							
P	Coupling ring	30	30	30	50	50	50	50	50	50							
Q	End ring	140	140	280	100	400	200	260	130	130							
R	Dripline, 1600m	4	4	2	4	13	7	8	4	4							
S	Teflon tape roll	4	4	4	4	6	6	6	6	6							

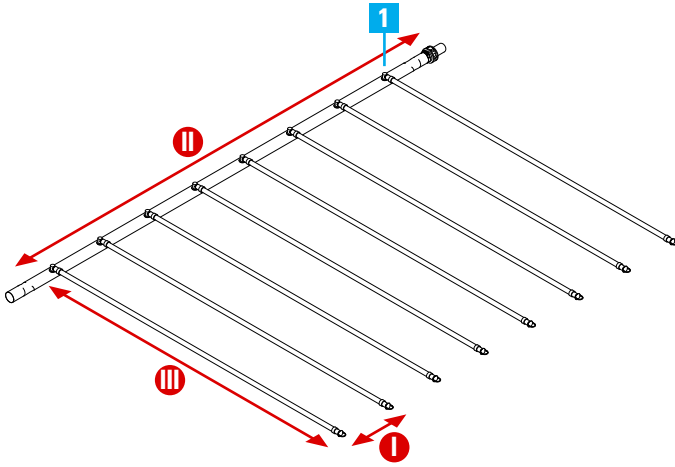
System characteristics

System Cat. No.	42000-015400		42000-015500	42000-015505	42000-015540	42000-015900	42000-015740	42000-015700	42000-015750
DripK system name	1608	3216	4008	4016	5010	10FT	9610	9608	9616
Area (m²)	1600	3200	4000	4000	5000	10000	10000	10000	10000
I Dripline spacing (m)	0.8	1.6	0.8	1.6	1.0	0.5	1.0	0.8	1.6
II Max. length of FXN distribution line (m)	50		50	50	50	100	100	100	100
III Max. length of a single dripline (m)	80		80	80	100	100	100	100	100
Max. dripline quantity	62		62	32	50	200	100	125	62
Max. total dripline length (m)	4960		4960	2560	5000	20000	10000	12500	6200

Layouts

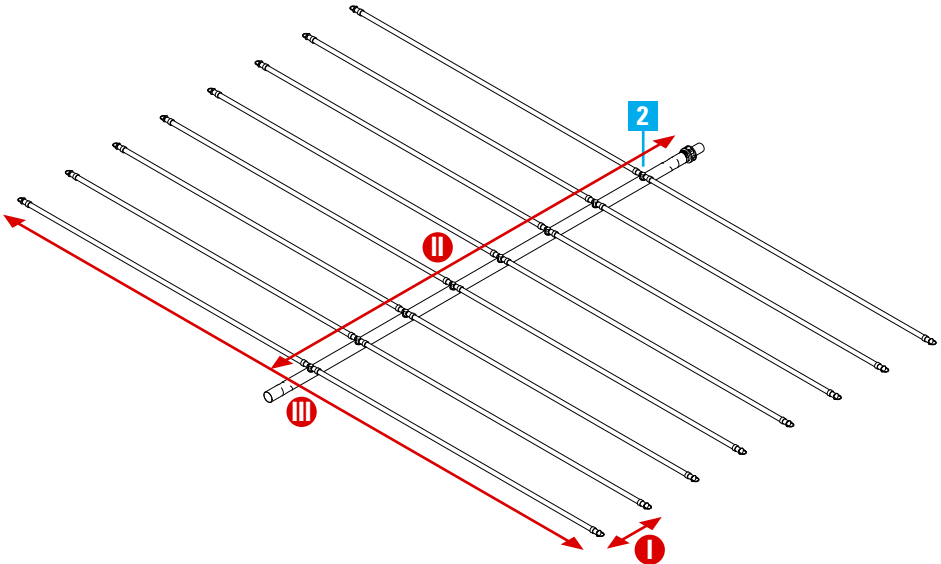
Block type 1

Dripline spacing: 0.5m/0.8m



Block type 2

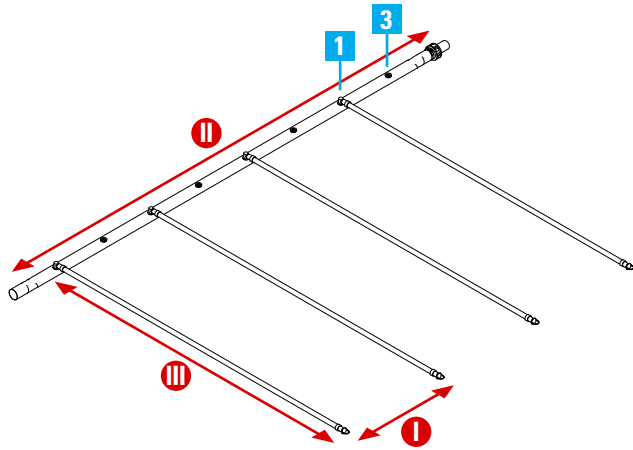
Dripline spacing: 0.5m/0.8m



Layouts [cont.]

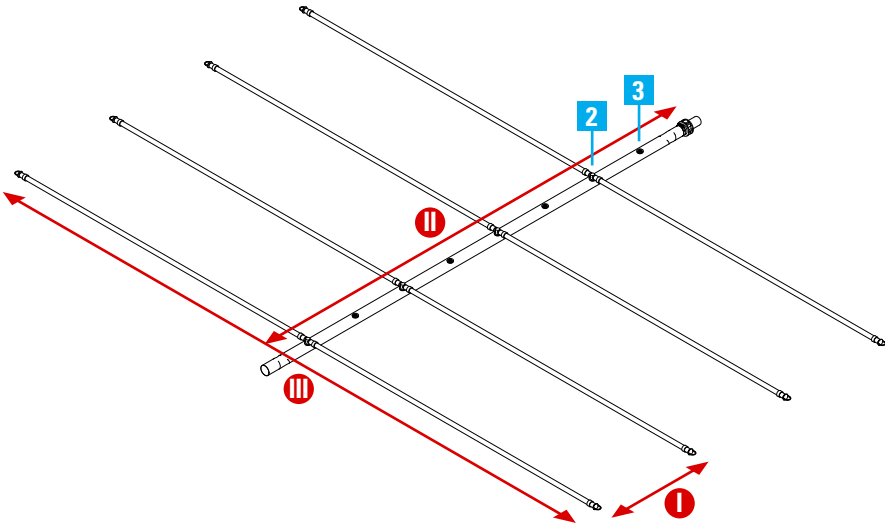
Block type 3

Dripline spacing: 1.0m/1.6m



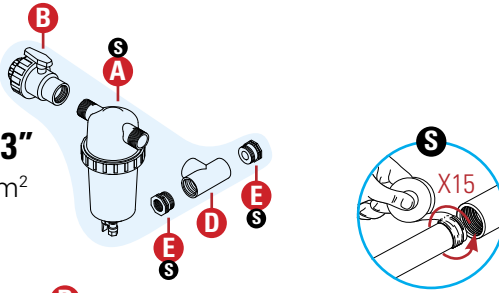
Block type 4

Dripline spacing: 1.0m/1.6m

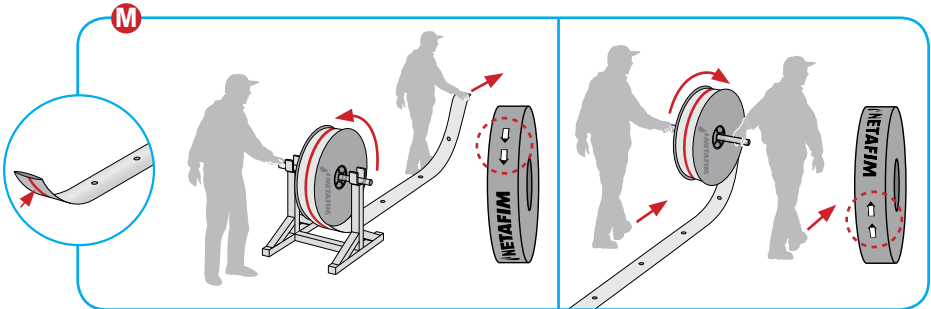
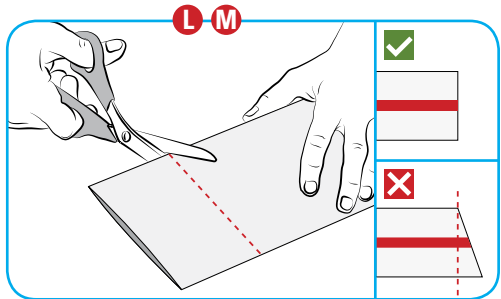
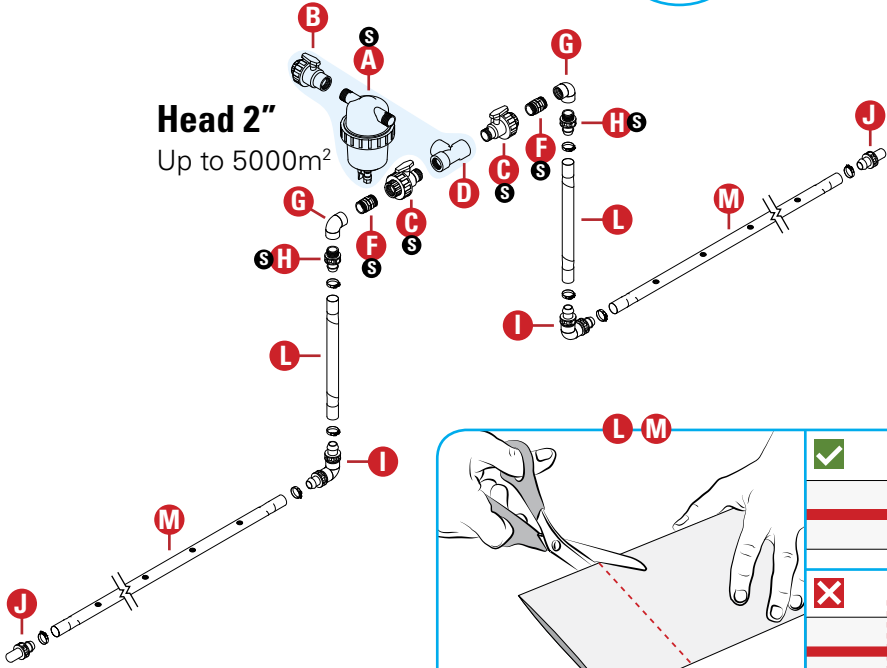


Head assembly

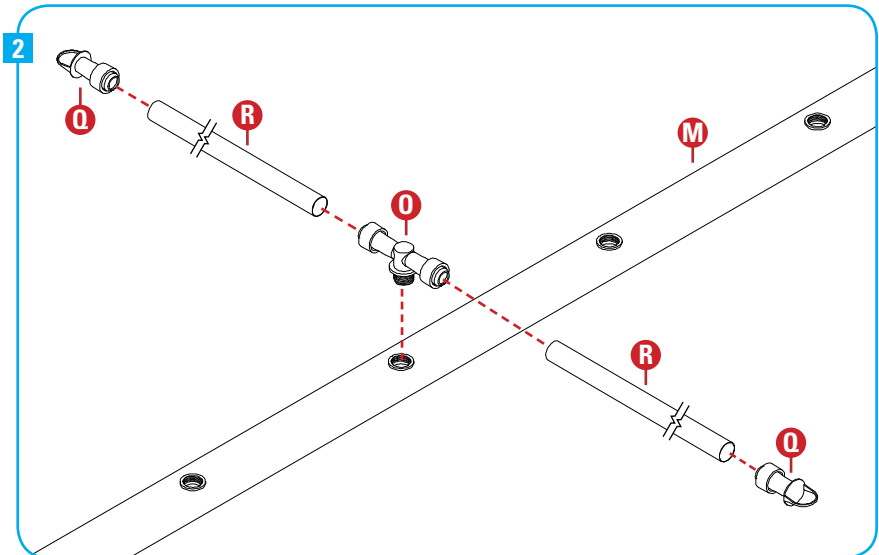
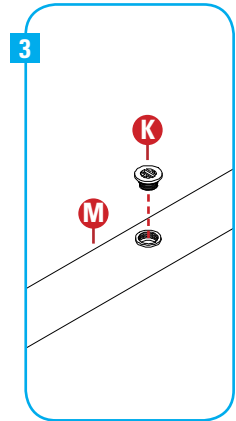
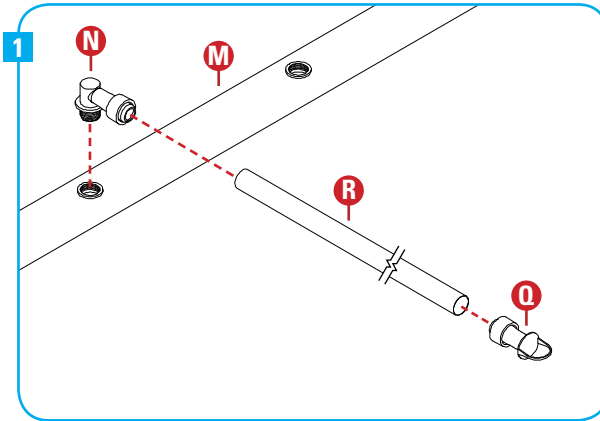
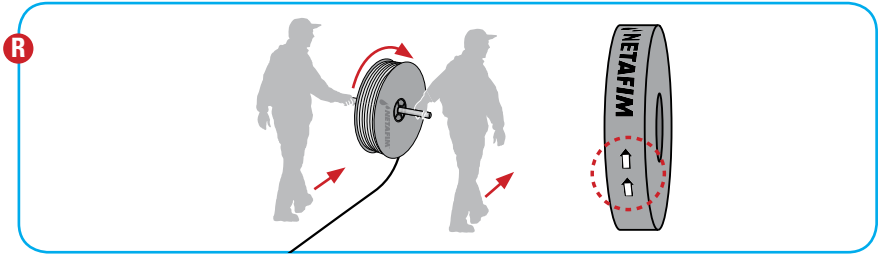
Head 3"
10000m²



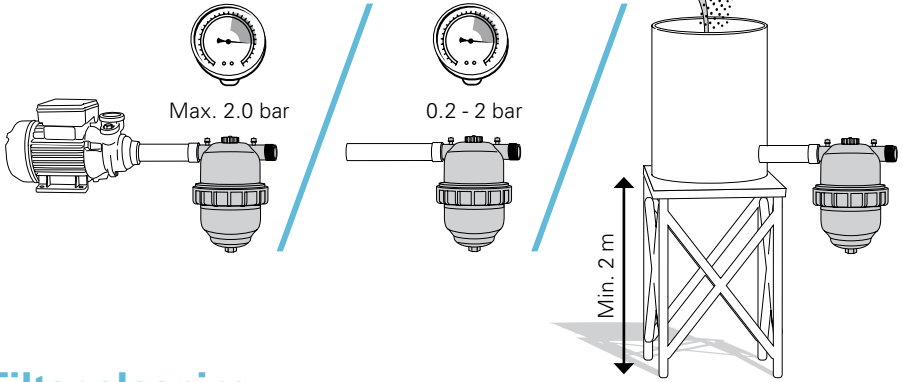
Head 2"
Up to 5000m²



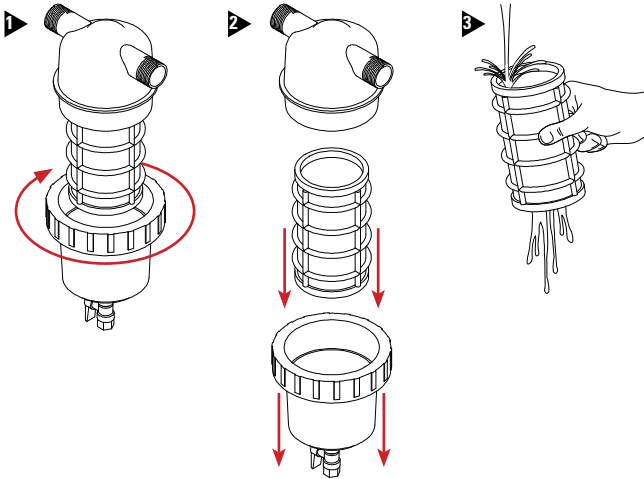
Dripline connection and assembly



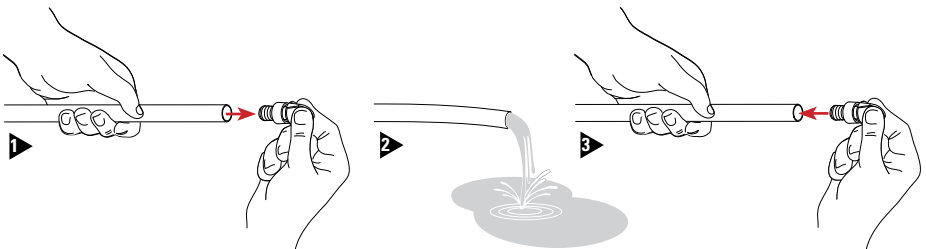
Water source



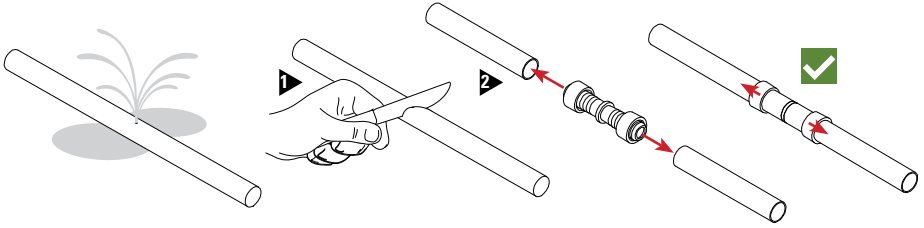
Filter cleaning



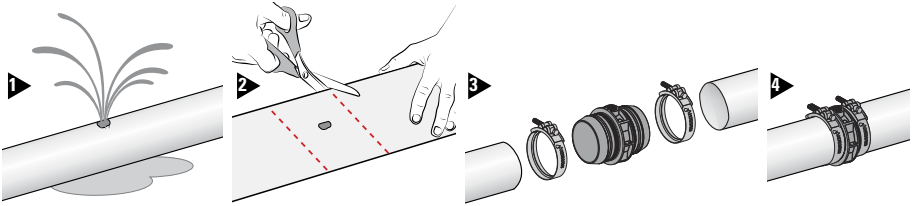
Dripline flushing



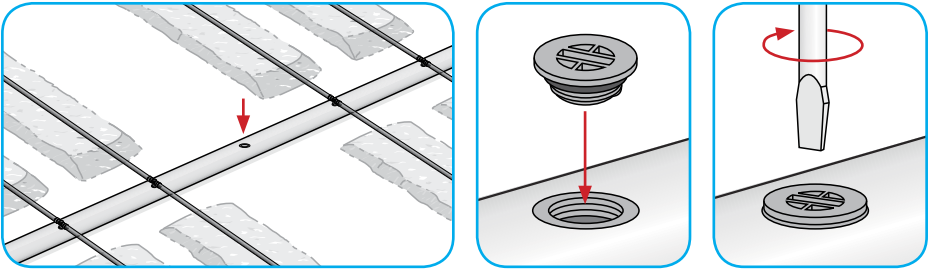
Dripline repair/lengthening



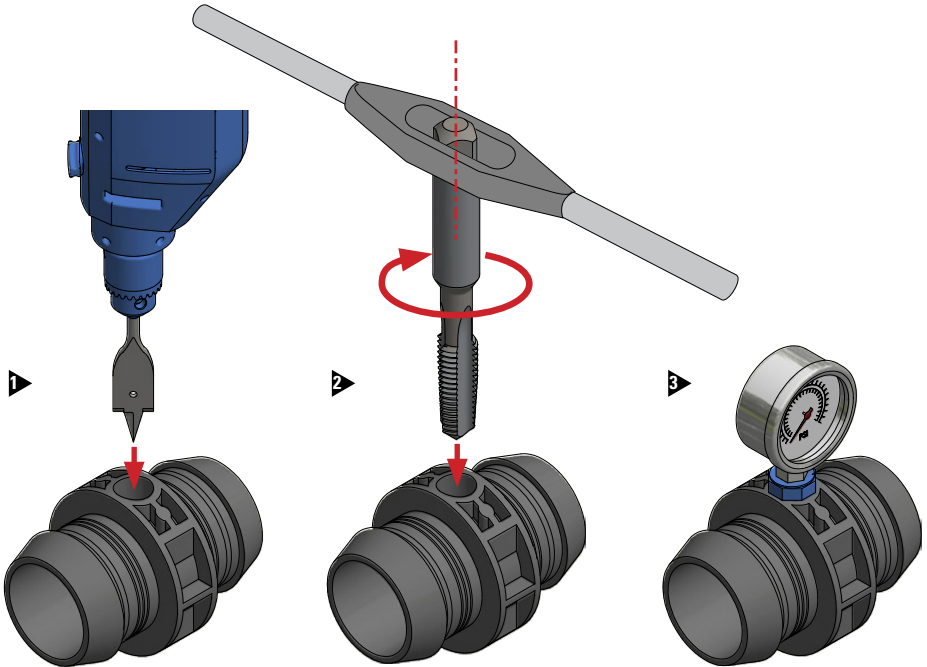
FlexNet repair/lengthening



FlexNet outlet plugging



Branching a 1/2" thread



Netafim Tapping kits:

Cat No. 45000-003162 and 45000-003185.

Other Possible uses:

- Branching connector
- Air vent.

GROW MORE WITH LESS

WWW.NETAFIM.COM